

MONTHLY MEMBERSHIP PROGRESS REPORT

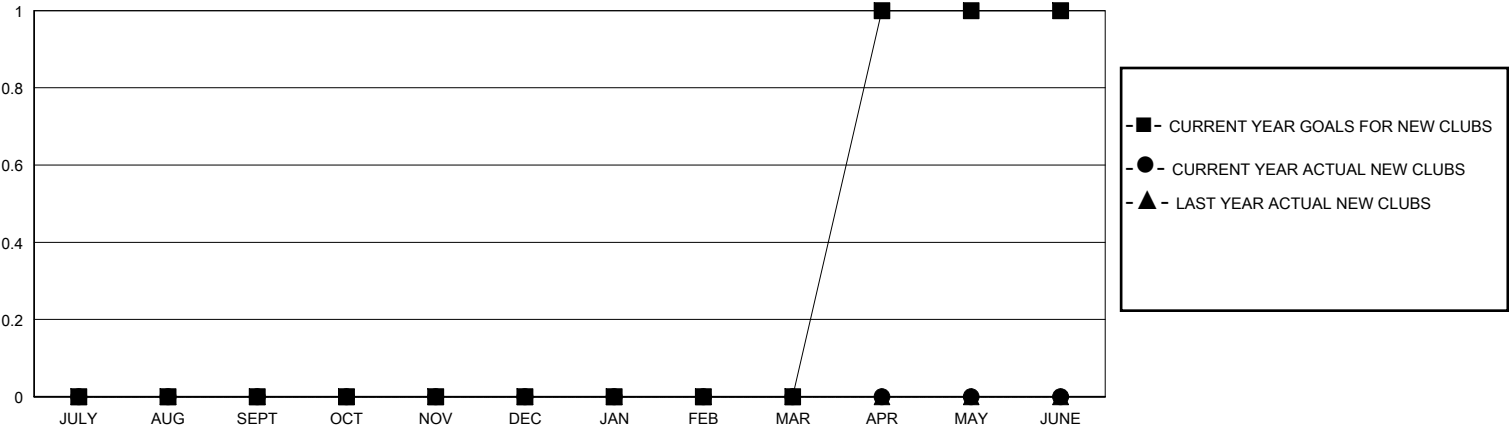
District 11 B2

Results as of: 7/31/2025

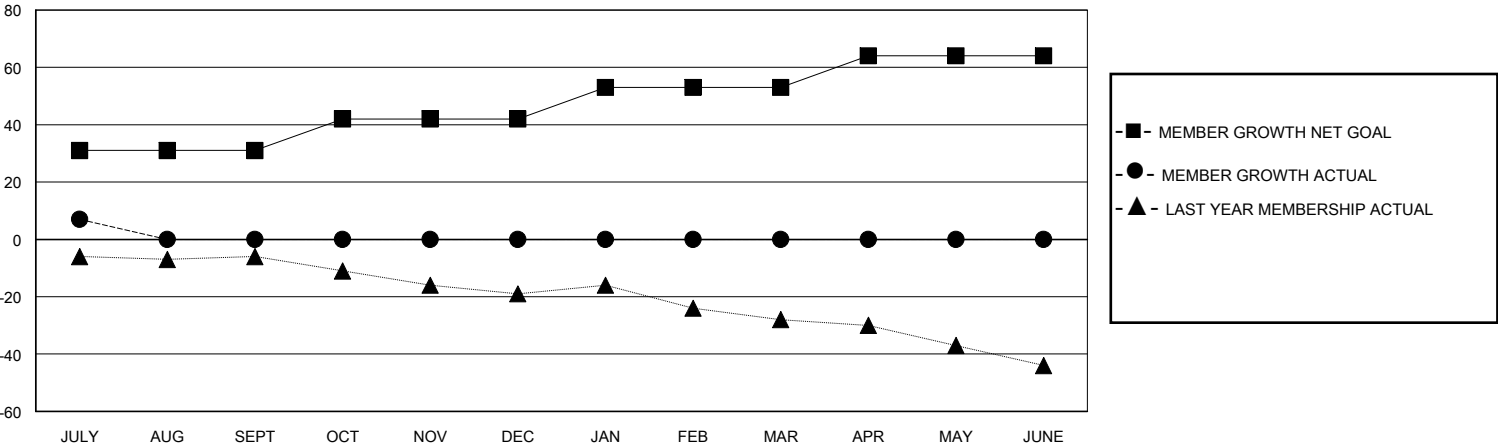
GMT: LOCATION MICHIGAN GMT CA

Clubs				Members			
RESULTS FOR 2025-2026				RESULTS FOR 2025-2026			
QUARTER	NEW CLUB GOAL	NEW CLUBS	DROPPED CLUBS	QUARTER	MEMBER GROWTH NET GOAL	MEMBER GROWTH ACTUAL	DROPPED MEMBERS ACTUAL (including transfers)
JULY/AUG/SEPT	0	0	0	JULY/AUG/SEPT	31	8	1
OCT/NOV/DEC	0	0	0	OCT/NOV/DEC	11	0	0
JAN/FEB/MAR	0	0	0	JAN/FEB/MAR	11	0	0
APR/MAY/JUNE	1	0	0	APR/MAY/JUNE	11	0	0

GOALS AND ACTUAL NEW CLUBS CUMULATIVE



GOALS AND ACTUAL MEMBERS CUMULATIVE



DROPPED CLUBS: 0	4 CLUBS OF 31 ADDED 1 OR MORE NEW MEMBERS	<u>GENDER DISTRIBUTION</u> MALE 495 (63.38%) FEMALE 285 (36.49%)
<u>DROPPED MEMBERS</u> DECEASED 1 CLUB CANCELLED 0 OTHER 0 TOTAL 1	<a href="#">CLICK HERE FOR CUMULATIVE MEMBERSHIP DATA</a>	TOTAL FAMILY UNIT MEMBERS 203 FAMILY MEMBERS PAYING HALF DUES 102